



The incremental AMI, Zero Infrastructure, Off-cycle read, Remote Disconnect, Prepay, ERT, Billing integration meter

### LINK Xi

Nighthawk presents the LINK Xi meter, an innovative single phase meter, which unites the strength of the Itron Centron with leading-edge communications technology. The feature rich LINK Xi is enabled by Nighthawk's scalable Adaptiv platform bringing affordable AMI to the market. This solid-state meter is available with or without disconnect and ships ready for your Prepay rollout. Regardless of your business drivers this meter is ready to support small commercial demand customers, advanced billing, while extracting maximum value from existing investments.

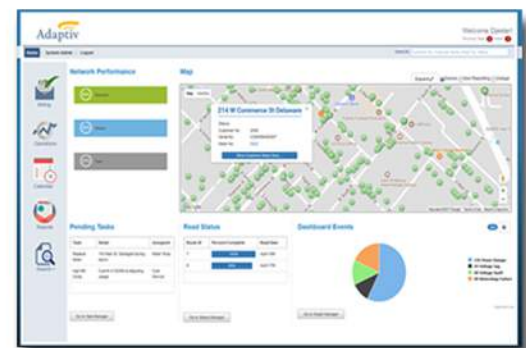
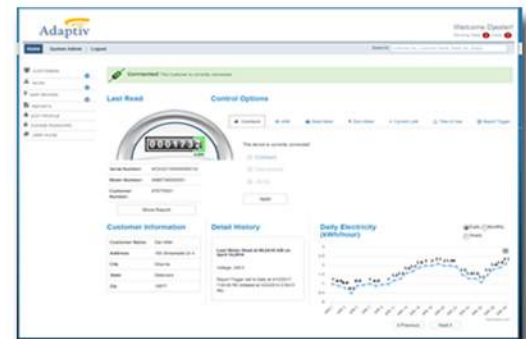


Nighthawk Link Xi in CENTRON II ©

The LINK Xi allows you to expand your AMI system strategically as budgets allow while still adding functionality and value to the utility. Its full two-way communication and self-healing mesh capabilities offer built in redundancy. With exceptional accuracy of 0.3 percent and advanced outage and voltage monitoring you are getting unprecedented value from your AMI system.

### Features:

-  Remote disconnect with integrated 200 Amp disconnect
-  Kvarh, Vah, detailed reports
-  Unidirectional net metering
-  Customer Interface button
-  Electronic LCD display
-  Bi-Directional metering
-  Polycarbonate cover
-  Voltage measurement
-  Non-volatile memory
-  Optical tower
-  Load profile



Adaptiv prepay from Nighthawk is a unique, wireless two-way residential metering and power management tool. It combines a Scalable AMI disconnect meter with Nighthawk's Adaptiv wireless technology built-in under the glass.

Add anywhere in your service territory, from city centers to rural locations. Nighthawk offers the most cost effective smart meter solution. Built in ERT allows the Nighthawk solution to function seamlessly with your drive by or walk by read practices.

# The incremental AMI, Zero Infrastructure, Off-cycle read, Remote Disconnect, Prepay, ERT, Billing integration meter

## LINK Xi

Nighthawk's Adaptiv Scalable AMI technology is built in this CENTRON II C12.19 meter which supports the measurement of average voltage data, instantaneous voltages and tracks minimum/maximum voltages during each interval. The interval data for each phase is compared with the configured thresholds at each EOI. Events are recorded for the first interval when a threshold is exceeded, when it returns to normal, and when it is exceeded again. To minimize recording excessive events, only one event is recorded when multiple successive intervals exceed thresholds.

## Technical Data

### Power Requirements:

- ANSI C12.1 - 2008
- ANSI C12.20 (Class 0.5) - 2010
- ANSI C12.18 - 2006
- ANSI C12.19 - 2008
- ANSI C12.21
- FCC CRF Title 47 Part 15.247 Subclass C
- Industry Canada RSS-210

### Operating Environment:

- Temperature: -40° to +85°C
- Humidity: 0% to 95% non-condensing
- Nine-digit liquid crystal display  
Annunciator height: 0.088"
- Six-digit data height: 0.4"
- Display duration: 1-15 seconds
- Three-digit code number height:  
0.24" 3-segment electronic load indicator

### Meets applicable standards:

- Voltage rating: 120-240 V  
(overvoltage capabilities up to 480V)
- Operating voltage: ±20% (60 Hz)
- Frequency: 50Hz, 60 Hz
- Operating range: ±3 Hz
- Battery voltage: 3.6 V nominal
- Battery operating range: 3.4 - 3.8 V

### General Information

- Interval lengths: Programmable from 5, 6, 10,12,15,20, 30 to 60 minutes
- Crystal sync: +0.01% @ 25°C; +0.025% over full temperature range
- Battery: +0.005% @ 25°C; +0.005% to -0.02% over full temp range

## Product Availability:

Meter Form	Class	Cell	Cell with ERT TX	Cell+ Mesh	Cell+ Mesh with Collector	Cell+ Mesh with ERT TX	Mesh	Mesh with ERT TX
1S	200	RDC981-00D	RDC981-E0D	RDC981-0MD	RDC981-RMD	RDC981-EMD	RDC2M1-0MD	RDC2M1-EMD
2S	200	RDC980-00D	RDC980-E0D	RDC980-0MD	RDC980-RMD	RDC980-EMD	RDC2M0-0MD	RDC2M0-EMD
2S	320	RDC98A-00N	RDC98A-E0N	RDC98A-0MN	RDC98A-RMN	RDC98A-EMN	RDC2MA-0MN	RDC2MA-EMN
12S	200	RDC982-00D	RDC982-E0D	RDC982-0MD	RDC982-RMD	RDC982-EMD	RDC2M2-0MD	RDC2M2-EMD