



***Adaptiv***<sup>™</sup>

Scalable AMI





## A New Adaptable AMI

Adaptiv<sup>™</sup>, Nighthawk's next-generation AMI solution for utilities eliminates the complexity and burdens of infrastructure while providing a robust platform delivering secure and expanded capabilities. Utilities can build-out their network any way they want regardless of propagation studies or tower locations. Significantly improves customer service without having to add high paid IT staff to payroll. Utilities can now focus on their core business and let Adaptiv grow at any rate needed as budgets allow while continuing to reduce operating costs.

Utilities can now take advantage of a flexible platform while laying the groundwork for the city's future IoT needs. As the city's smart grid needs evolve Adaptiv is designed to change with you continuing to add economic benefits. Adaptiv's next-generation mesh technology provides exceptional capacity allowing for expanded smart city initiatives.

The new Link meter leverages the best of class ANSI products from Itron and Aclara while combining two-way communications, security and redundancy at no additional cost. Add to that the Adaptiv hosted software and you have a full featured smart grid solution designed to deliver an exceptional ROI with minimal effort.

"As the town has grown we have an increasing number of rental homes and apartments with a high turnover rate, being able to read these meters remotely has reduced truck rolls and allows our already limited meter department to focus on other tasks."

**Chris Pierce** - *Middletown, Delaware*



"Adaptiv has allowed us to move from a manual read system to an AMI solution. It has also given us the benefit of off-cycle reads and disconnect capabilities. It allows us to transition at our own pace and works with our existing billing system.

The hosted software required no additional IT resources."

**Michael Runyon** - *Village of Riverton, IL*



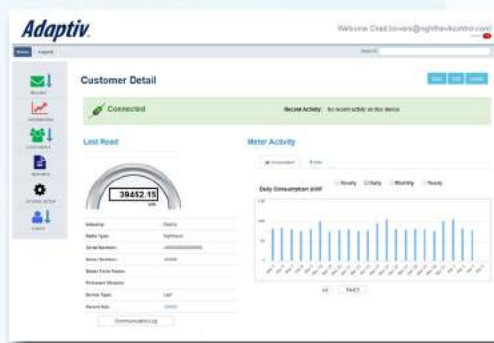
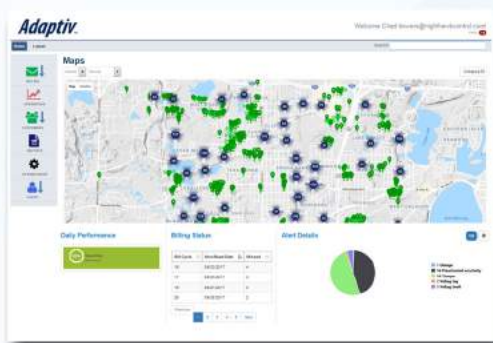
# Flexible, Adaptive, and Incremental Deployment

Adaptiv's flexibility enables utilities to extract maximum value from existing investments while transitioning to two-way AMI technology at any rate of deployment.

Nighthawk's Adaptiv is easy to use and implement. Our solution allows you to add our plug & play, out-of-the-box ready meters where needed as time and budgets permit.

With full two-way communications built under the glass, each piece adds new functionality to your system. Adaptiv offers you unequaled flexibility when building towards a total remote read system with billing integration.

## Powerful easy-to-use fully hosted software interface integrates with your billing system



Nighthawk's award winning hosted solution provides a feature rich environment allowing full control and read capability. From the day meters are installed they are fully functional and ready for operation in the system. Over the air features can be activated or deactivated to meet the utility's needs. System alerts and notifications are readily available providing proactive information for events such as outage and low voltage. Using common protocols and definable API's the Adaptiv software can provide reads and other critical information to any billing or back-office system. Adaptiv has been praised for its robust security and ease of use. Billing and IT departments love the Nighthawk Adaptiv solution because our cloud-based software requires no internal support and is always up to date with the most advanced security features.

- Easy to read customer information screen for deployed Nighthawk devices
- Control varied device types on varied networks through a single interface
- Secure encrypted interface ensures only utility personnel have access
- Alerts on both outage and power-up events with mapping
- Detailed information on account status as well as history
- Outage notification email or cell phone text message
- Units can be removed from field and reissued
- MultiSpeak, NISC, and SEDC compliant





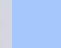
Remote access in any browser

# Understanding the Adaptiv™ Hub and Leaf Network



Adaptiv's™ hub and leaf strategy provides multiple redundancies and a self creating, self healing network.

The system can be expanded to include additional Adaptiv mesh devices including water read heads.

-  Adaptiv™ meters with cellular + mesh hub radio (Hubs utilize cellular backhaul)
-  Adaptiv™ meters with mesh leaf radio (Capable of two leaf hops to reach nearest hub)
-  Adaptiv™ mesh radio enabled water heads

## A total solution

The Adaptiv platform delivers an easy to install, affordable AMI solution utilizing standards-based integration and innovative high bandwidth cellular-mesh technologies. By leveraging the best of breed meters on the market Adaptiv enables advanced functionality starting with secure two-way communications to the meter. Providing hosted software available from anywhere on any device gives the utility the flexibility to deploy AMI without costly and complex infrastructure at a pace that works for their budget. With Adaptiv utilities are able to shape their future and affect change in their market by leveraging the data to make informed business decisions while improving revenue and customer service.

## Filling a gap

Nighthawk recognized that all utilities are not the same. True they share the same drivers and all aim for the same goals but they go about it very differently. Many mid to small utilities don't have the same resources available and are forced to do more with less. That is where Nighthawk identified a gap and filled that gap with Adaptiv. The platform was specifically developed for those utilities facing everyday challenges such as personnel and budget. Our goal was to reduce the complexity and cost of AMI for everyone. Adaptiv is a tool that will meet your needs today while providing a path for the future.

## About Us:

Nighthawk is a subsidiary of McWane Inc, a leading manufacturer of ductile iron pipe, valves, hydrants, and fittings. McWane products make up the backbone of vital water distribution and wastewater treatment systems throughout North America, dependably providing the U.S. with clean drinking water. The company operates 25 manufacturing plants including 13 iron foundries across the United States, Canada, Australia, China, Norway, India, and the United Arab Emirates.

**Adaptiv™** *It's as easy as installing a meter!*



701 Canyon Dr. STE 105  
Coppell, TX 75019  
972-717-5555  
NighthawkControl.com